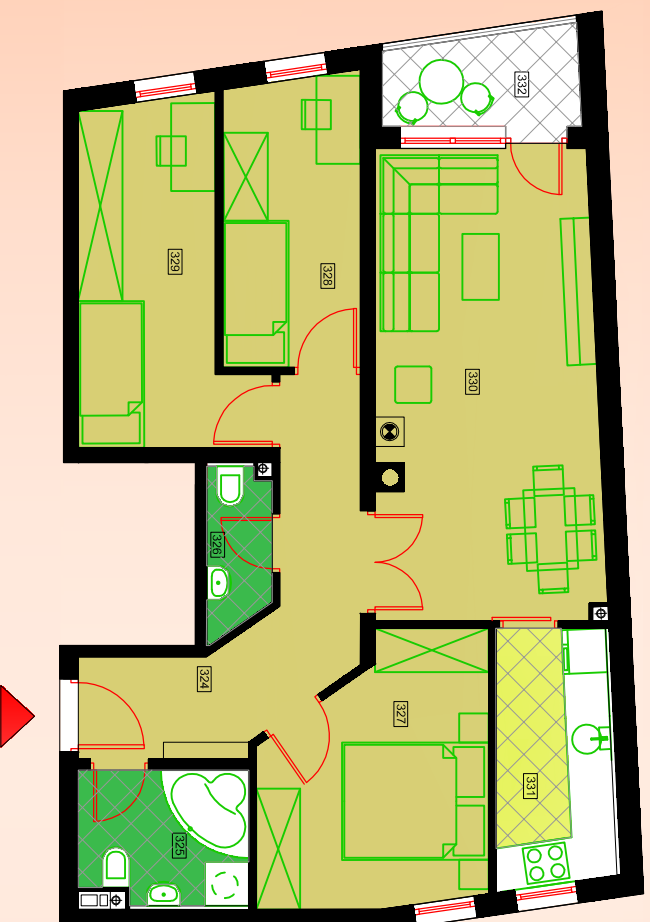
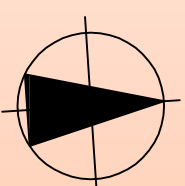


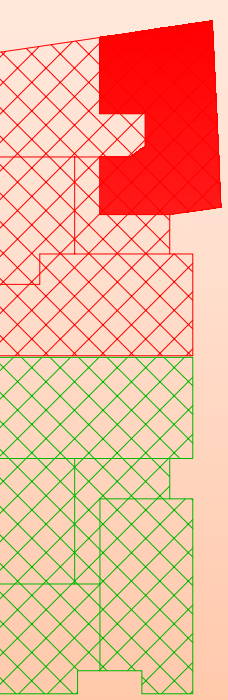
LAMELA 1 - TREĆI SPRAT - STAN 4



Lamela 1 / TREĆI SPRAT / Stanovanje

STAN 4 (TROIPSOBAN)

No	Naziv prostorije	m ²	m ¹	Završna obrada poda	Tip poda
324	HODNIK	9.00	17.30	PARKET	P ₇
325	KUPATILLO	4.13	8.35	KERAMIČKE PLOČICE	P ₅
326	WC	1.91	6.29	KERAMIČKE PLOČICE	P ₅
327	SOBA	10.32	13.05	PARKET	P ₇
328	SOBA	7.38	11.63	PARKET	P ₇
329	SOBA	9.63	14.78	PARKET	P ₇
330	DNEVNI BORAVAK I TRPEZARIJA	19.42	19.89	PARKET	P ₇
331	KUHINJA	5.51	10.15	KERAMIČKE PLOČICE	P ₆
332	LOBA	0.83, 4.9#	2.75 8.17	KERAMIČKE PLOČICE	P ₈
STAN 4 UKUPNO NETO KORISNO 70.05m ²					



STAMBENO-POSLOVNI OBJEKAT - ULICA MILANA KRANOVIĆA (KOD STUDENTSKOG CENTRA)