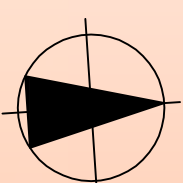
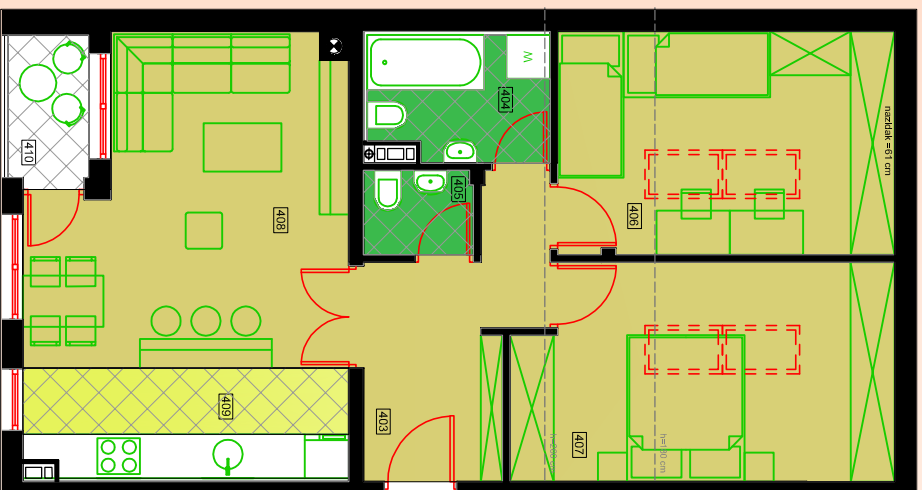


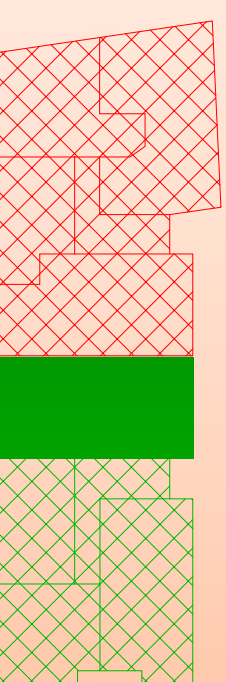
LAMELA 2 - POTKROVLJE - STAN 1



Lamela 2 / POTKROVLJE / Stanovanje

STAN 1 (TROSOBAN)

| | | | | | | |
|--|-----------------------------|---------------|-------|-------------------|----------------|----------------|
| 403 | HODNIK | 7.58 | 14.40 | PARKET | P ₇ | |
| 404 | KUPATILO | 4.16 | 8.49 | KERAMIČKE PLOČICE | P ₃ | |
| 405 | WC | 1.72 | 5.29 | KERAMIČKE PLOČICE | P ₃ | |
| 406 | SOBA | 14.01 | 7.60 | 15.47 | PARKET | P ₇ |
| 407 | SOBA | 15.10 | 8.45 | 16.49 | PARKET | P ₇ |
| 408 | DNEVNI BORAVAK I TREPZARIJA | 17.61 | 18.23 | PARKET | P ₇ | |
| 409 | KUHINJA | 6.56 | 11.90 | KERAMIČKE PLOČICE | P ₆ | |
| 410 | LOBA | 0.8x2.28=1.82 | 6.41 | KERAMIČKE PLOČICE | P ₈ | |
| STAN 1 NETO KORISNO 68.56m² | | | | | | |
| STAN 1 NETO KORISNO REDUKOVANO ZBOG VISINE 55.50m ² | | | | | | |



STAMBENO-POSLOVNI OBJEKAT - ULICA MILANA KRANOVIĆA (KOD STUDENTSKOG CENTRA)