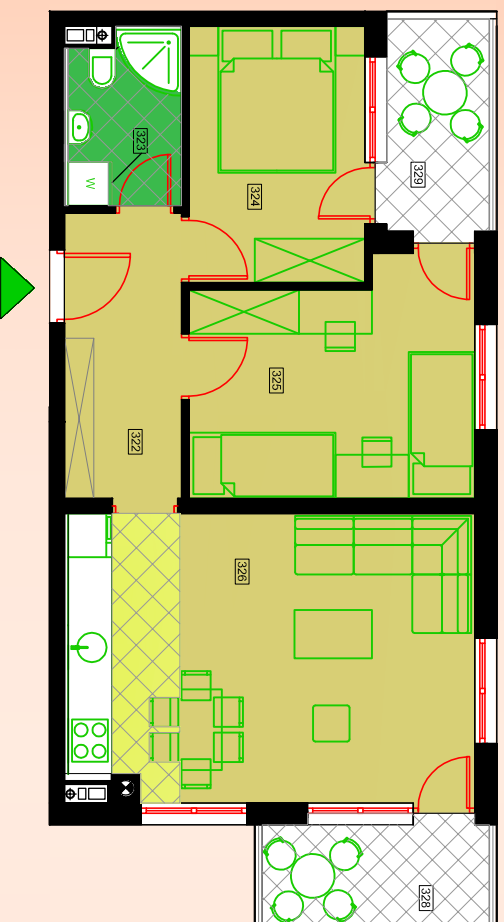
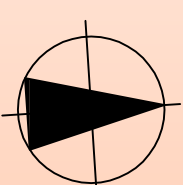


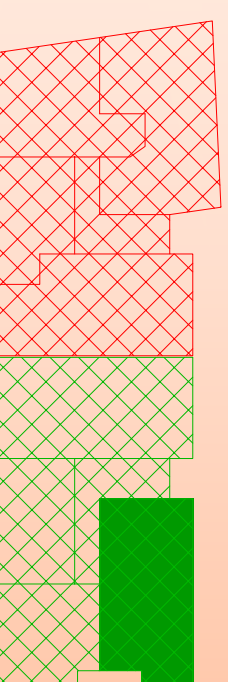
LAMELA 2 - TREĆI SPRAT - STAN 4



Lamele 2 / TREĆI SPRAT / Stanovanje

STAN 4 (TROIPOSOBAN)

322	HODNIK	6.32	11.19	PARKET	P ₇
323	KUPATILO	3.56	7.90	KERAMIČKE PLOČICE	P ₈
324	SOBA	8.46	11.93	PARKET	P ₇
325	SOBA	11.86	14.63	PARKET	P ₇
326	DNEVNI BORAVAK I TRPEZARIJA	15.96	16.09	PARKET	P ₇
327	KUHINJA	5.63	10.95	KERAMIČKE PLOČICE	P ₈
328	BALKON	0.4x4.47=1.79	9.32	KERAMIČKE PLOČICE	P ₈
329	LOBA	0.8x4.33=3.47	9.24	KERAMIČKE PLOČICE	P ₈
STAN 4 UKUPNO NETO KORISNO 57.05m ²					



STAMBENO-POSLOVNI OBJEKAT - ULICA MILANA KRANOVIĆA (KOD STUDENTSKOG CENTRA)